

# Enclosed Spring Mountings

Type ES - Enclosed Spring & ECS - Enclosed Captive Spring

licensed in 1992 by

**CHRISTIE  
& GREY**



A unique range of mountings designed primarily for building services applications where the control of low frequency vibration and noise emanating from mechanical plant is of paramount importance.

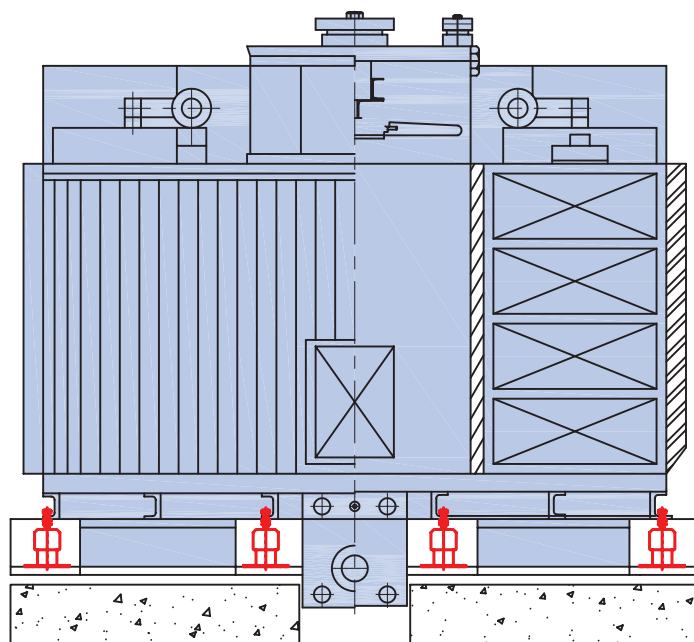
The benefits of a combined rubber and steel housing for the spring have helped establish the ES and ECS mountings as industry standards accepted by specifiers, equipment manufacturers and mechanical services installers alike.

## DESIGN FEATURES

- Nitrile rubber (oil resistant) lower spring housing eliminates the possibility of metallic continuity and ensures excellent acoustic performance. Steel reinforced on ECS range.
- Full enclosed captive assembly protects the spring and controls transient motion.
- All steel components zinc plated.
- Spring with nominal deflections of 20, 25 & 50 mm, laterally stable and with 50% overload capacity.
- Simple single bolt height adjustment.
- Spring viewing/inspection hole and ribbed rubber seating pads available for ES25 and ECS ranges.
- Colour coded labels for easy identification.

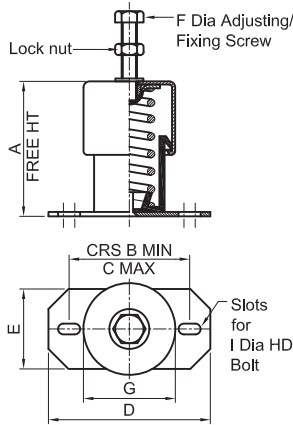
## TYPICAL APPLICATIONS

- Axial and Centrifugal Fans
- Air Handling Units
- Chillers and Cooling Towers
- Rotary and Multi Cylinder Compressors
- Diesel Generating Sets (ECS only)
- Mechanical Test Rigs
- Isolation of Sensitive Equipment

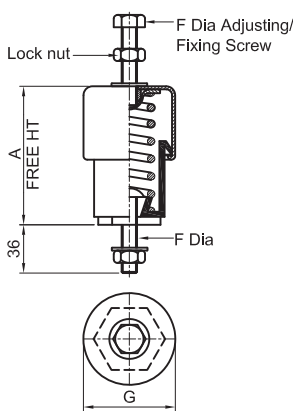


**RESISTOFLEX**  
SINCE 1947  
Vibration Shock Seismic Control

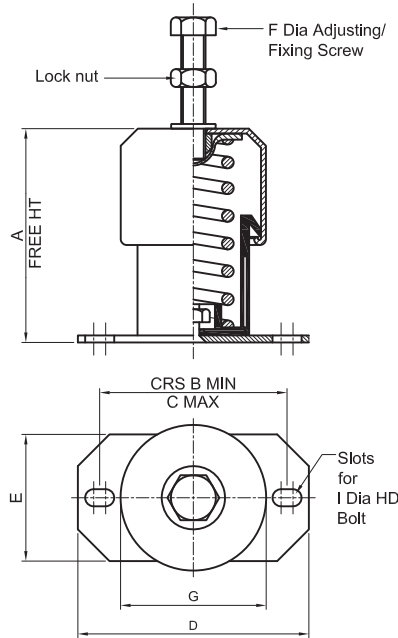
TYPE ES



TYPE ESB



TYPE ECS



TECHNICAL CHARACTERISTICS											
CODE	COLOUR CODE	RATED LOAD  (kg)	DEFLECTION AT RATED LOAD  (mm)	NOMINAL DIMENSIONS (mm)							
				A	B	C	D	E	F	G	I
ES 20/10	PURPLE	10	20	63	54	60	76	38	M8	48	M6
ES 20/15	YELLOW	15	20								
ES 20/20	GREY	20	20								
ES 20/40	GREEN	40	20								
ES 20/70	RED	70	20								
ES 15/100	BLUE	100	15								
ESB 20/10	PURPLE	10	20	65	-	-	-	-	M8	48	-
ESB 20/15	YELLOW	15	20								
ESB 20/20	GREY	20	20								
ESB 20/40	GREEN	40	20								
ESB 20/70	RED	70	20								
ESB 15/100	BLUE	100	15								
ES 25/30	YELLOW	30	25	88	85	90	110	70	M10	78	M8
ES 25/60	GREEN	60	30								
ES 25/100	BLUE	100	25								
ES 25/160	WHITE	160	25								
ES 25/250	RED	250	25								
ECS 25/200	BLACK/RED	200	25	127	130	150	180	95	M16	111	M12
ECS 25/300	BLACK/PURPLE	300									
ECS 25/400	BLACK/GREY	400									
ECS 25/500	BLACK/ORANGE	500									
ECS 25/600	BLACK/BROWN	600									
ECS 25/700	BLACK/BLACK*	700									
ECS 25/800	BLACK/GOLD	800									
ECS 25/1000	BLACK/1000*	1000									
ECS 25/1200	BLACK/1200*	1200									
ECS 25/1400	BLACK/1400*	1400									
ECS 50/100	BLACK/YELLOW	100	50	155	130	150	180	95	M16	111	M12
ECS 50/200	BLACK/GREEN	200									
ECS 50/300	BLACK/BLUE	300									
ECS 50/400	BLACK/WHITE	400									
ECS 50/500	BLACK/RED	500									

\* All figures are nominal for information only. \* Deflection is with ±15% tolerance.

INSTALLATION NOTES

- Correct fixing to equipment with locknut tightened
- Adjusting/fixing screw MUST be wound down sufficiently so that the spring pressure is felt before tightening the locknut
- For height adjustment, continue winding the adjustment screw down, thus raising the upper spring cover BUT DO NOT adjust by more than the original deflection obtained when the load was applied to the mounting

REFER TO IM026 FOR  
INSTALLATION INSTRUCTIONS

ISOLATION EFFICIENCY AT TYPICAL MACHINE SPEEDS

MACHINE SPEEDS (rpm)	EFFICIENCY %		
	15 mm DEFL.	25 mm DEFL.	50 mm DEFL.
300	DO NOT USE	34.0	75.2
500	68.7	83.3	92.3
750	88.1	93.2	96.7
1000	93.7	96.3	98.2
1200	95.5	97.4	98.7
1500	97.3	98.4	99.2
1750	98.0	98.8	99.4
2000	98.5	99.1	99.5

These figures assume infinitely stiff structural support.  
High frequency spring coil resonance effects are ignored.

Authorised Distributor :

**RENUKA**  
SALES CORPORATION

209, Masjid Moth, 316, 3rd Floor South Ex Plaza II, N.D.S.E.II New Delhi-110049  
Tel. : 011-26257262 . 011-41645670  
Email ID : renukasalescorporation@gmail.com, renukaji@rediffmail.com